

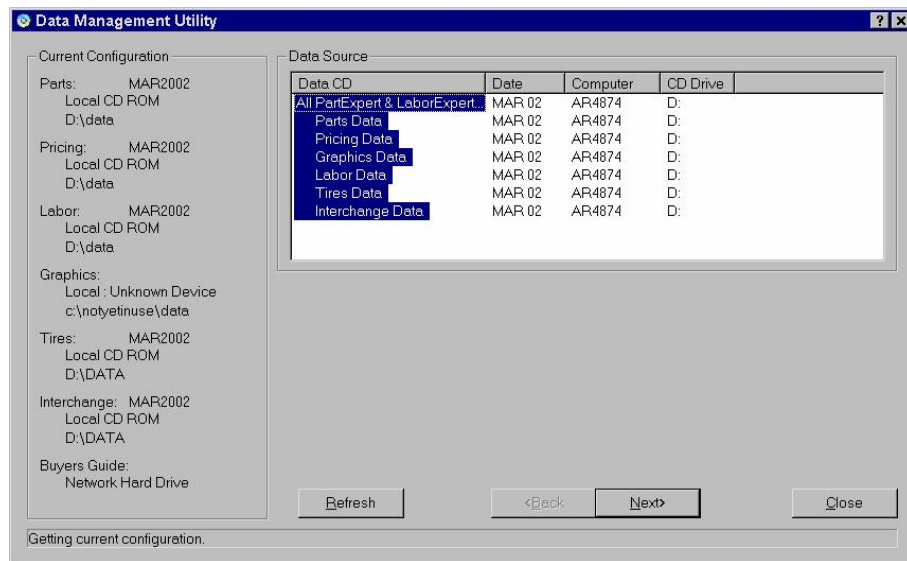


ACTIVANT™

1. Download the Data

Double click the Data Management Utility icon on the desktop of the server / single user system

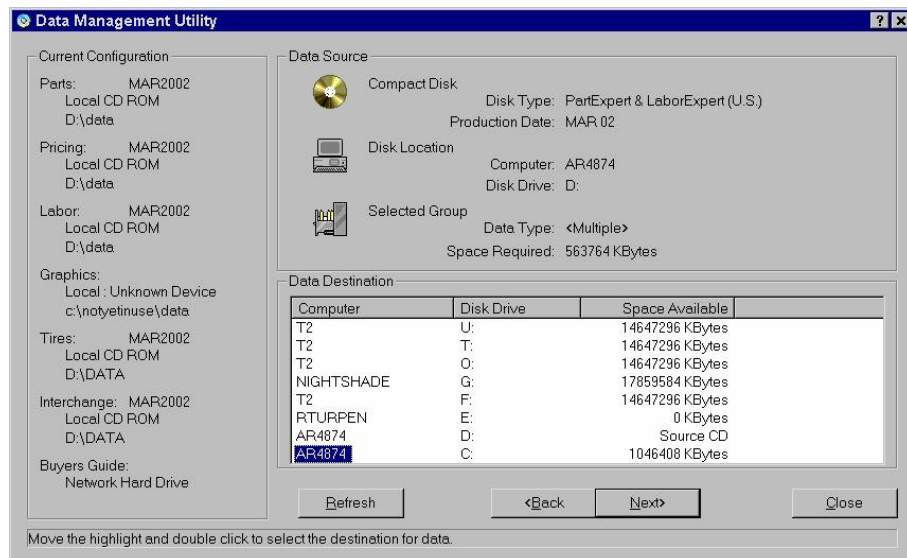
1.1. Data Source



The data from your CD drive should be highlighted

Click "Next" to continue

1.2. Data Destination

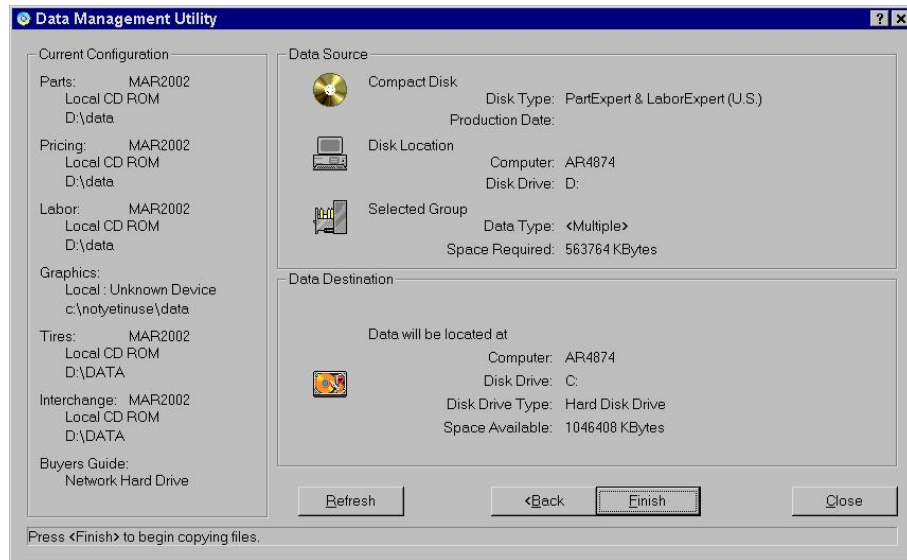


Select your local C drive and click "Next" to continue



ACTIVANT™

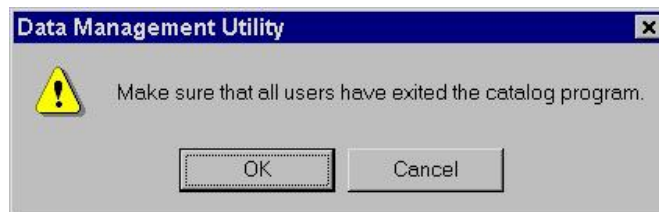
1.3. ata Information



This screen displays both the source and destination information

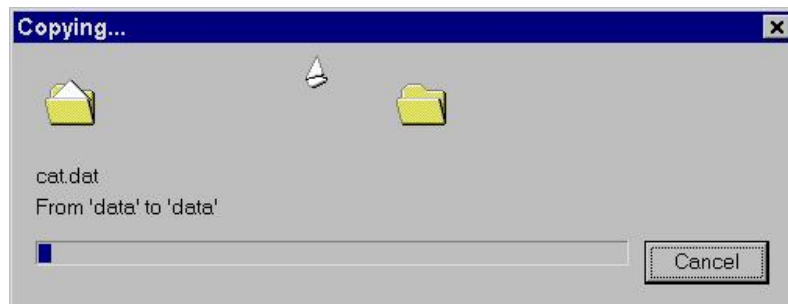
Click "Finish" to continue

1.4. Exit Confirmation



Make sure nobody is running Catalog and then click "OK"

1.5. Copying

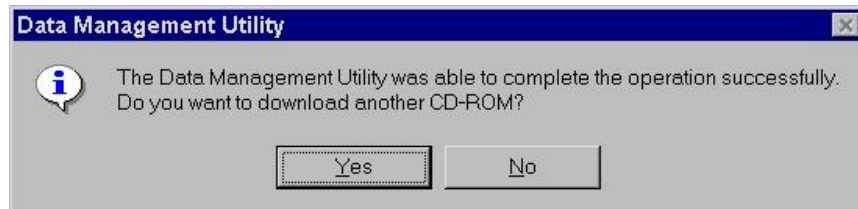


The Data Management Utility will now copy the data from the CD to the hard drive. This step will take about 10 – 15 minutes.



ACTIVANT™

1.6. Download Complete



This message is displayed when the Data Management Utility has finished copying all of the files on the CD. Select No.